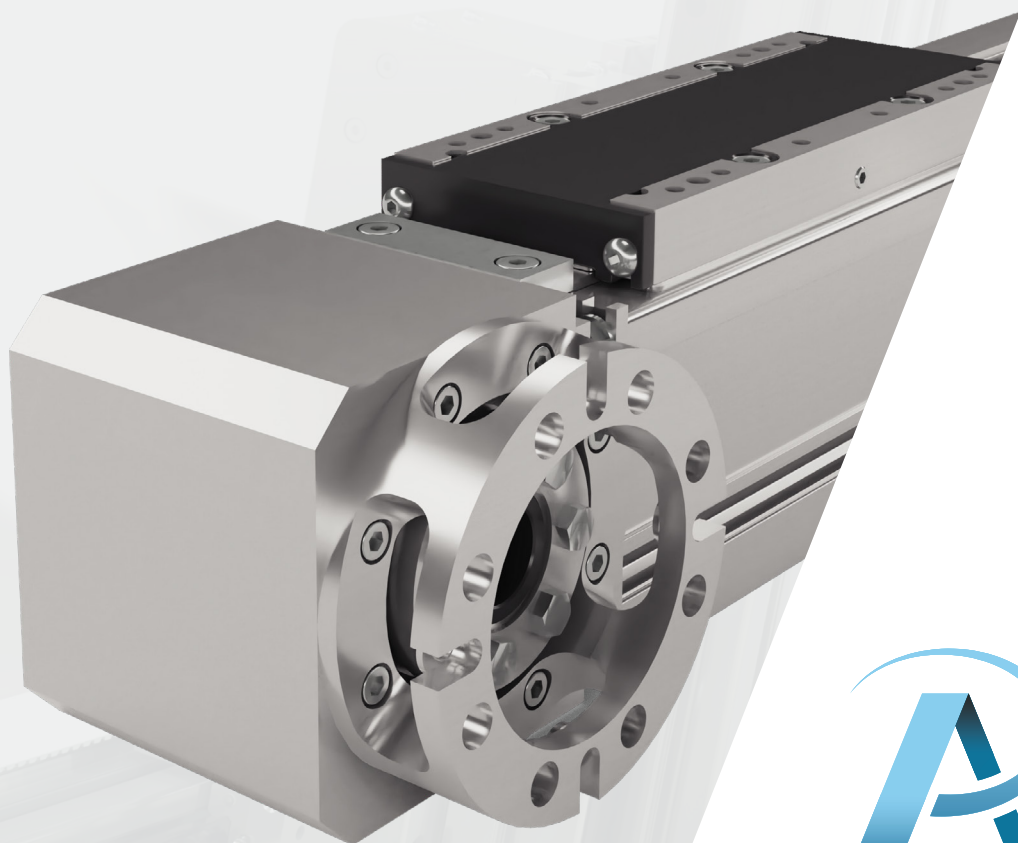
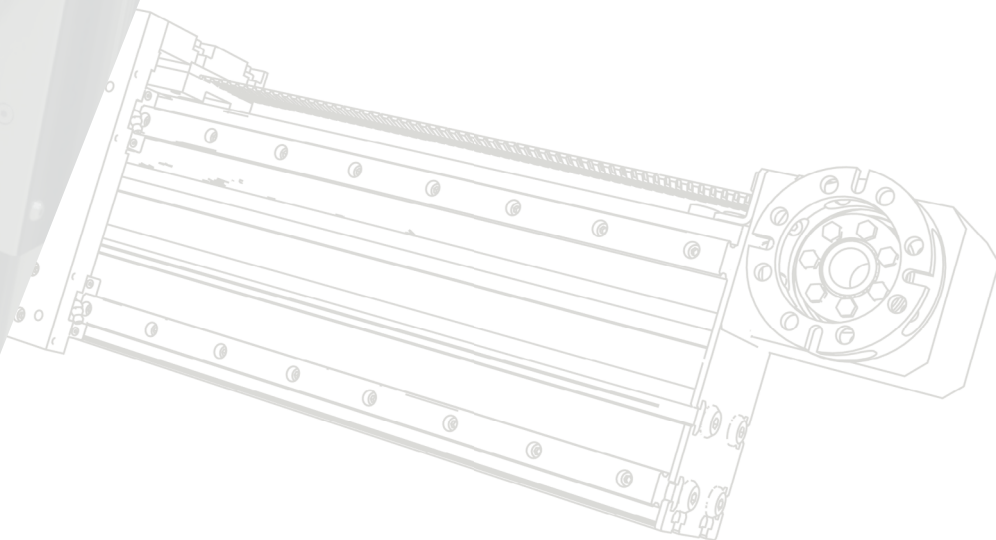


FC série



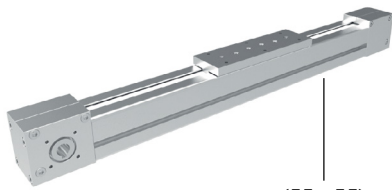
Alusic

LINEÁRNÍ POHONY
PŘEHLED MODELŮ



FC light série

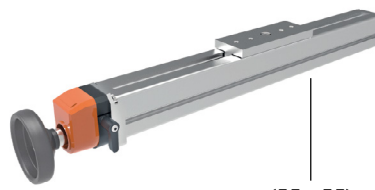
800.055



(55 × 55)

drážka AC 8
 $v = 1 \text{ m/s}$
 $a = 5 \text{ m/s}^2$
T5 L = 16 mm

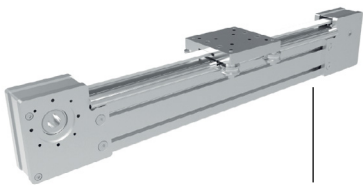
800.070



(55 × 55)

drážka AC 8
 $v = 1 \text{ m/s}$
 $\varnothing = 12 \text{ mm}$

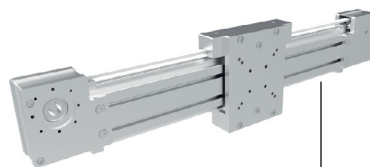
800.010



(45 × 90)

drážka AC 8
 $v = 1 \text{ m/s}$
 $a = 5 \text{ m/s}^2$
AT 10 L = 16 mm

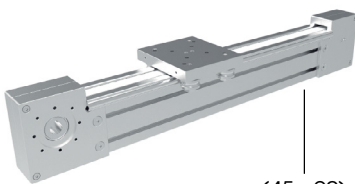
800.030



(45 × 90)

drážka AC 8
 $v = 1 \text{ m/s}$
 $a = 5 \text{ m/s}^2$
AT 10 L = 16 mm

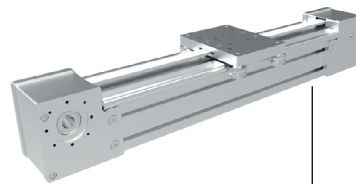
800.060



(45 × 90)

drážka AC 8
 $v = 1 \text{ m/s}$
 $a = 5 \text{ m/s}^2$
AT 10 L = 25 mm

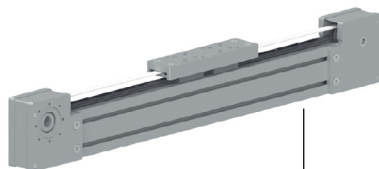
800.020



(90 × 90)

drážka AC 8
 $v = 1 \text{ m/s}$
 $a = 5 \text{ m/s}^2$
AT 10 L = 25 mm

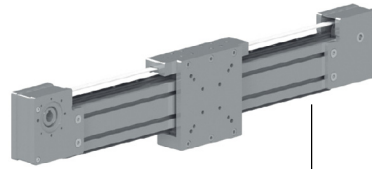
800.080



(45 × 90)

drážka AC 8
 $v = 3 \text{ m/s}$
 $a = 5 \text{ m/s}^2$
AT 10 L = 16 mm
 Lineární kuličkové
 vedení 15 mm

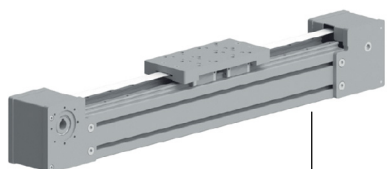
800.085



(45 × 90)

drážka AC 8
 $v = 3 \text{ m/s}$
 $a = 5 \text{ m/s}^2$
AT 10 L = 16 mm
 Lineární kuličkové
 vedení 15 mm

800.090



(90 × 90)

drážka AC 8
 $v = 3 \text{ m/s}$
 $a = 5 \text{ m/s}^2$
AT 10 L = 25 mm
 Lineární kuličkové
 vedení 15 mm

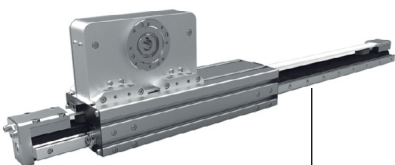
800.045



(45 × 45)

drážka AC 8
 $v = 3 \text{ m/s}$
 $a = 5 \text{ m/s}^2$
AT 10 L = 25 mm
 Lineární kuličkové
 vedení 20 mm

800.046



(45 × 45 karbon)

drážka AC 8
 $v = 3 \text{ m/s}$
 $a = 5 \text{ m/s}^2$
AT 10 L = 25 mm
 Lineární kuličkové
 vedení 20 mm

FC heavy série

811.HHW



(90×90)

drážka BH 10
v = 1 m/s
a = 5 m/s²
Eagle 8 L = 25 mm

811.HHL



(90×90)

drážka BH 10
v = 3 m/s
a = 5 m/s²
Eagle 8 L = 25 mm

Lineární kuličkové vedení 15 mm

811.HHS



(90×90)

drážka BH 10
v = 0,05 m/s
a = 5 m/s²
Eagle 8 L = 16 mm
krok: 3 mm

Lineární kuličkové vedení 15 mm

811.HHL / 813.HHL



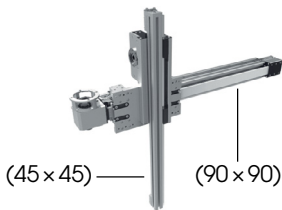
(90×90)

drážka BH 10
v = 3 m/s
a = 5 m/s²
Eagle 8 L = 50 mm

Lineární kuličkové vedení 20 mm

812.HHL.P / 813.HHL.P (ochrana proti prachu)

834.HHL.L / 835.HHL.L



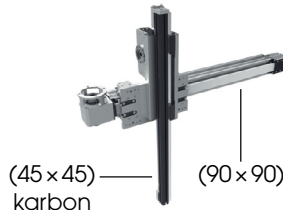
(45×45)

(90×90)

drážka BH 10
v = 3 m/s
a = 5 m/s²
Eagle 8 L = 50 mm
AT 10 L = 25 mm

Lineární kuličkové vedení 20 mm

836.HHL.L / 837.HHL.L



(45×45)

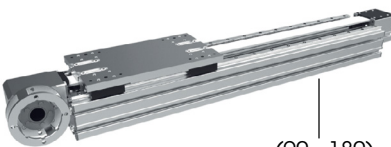
(90×90)

drážka BH 10
v = 3 m/s
a = 5 m/s²
Eagle 8 L = 50 mm
AT 10 L = 25 mm

Lineární kuličkové vedení 20 mm

karbon

814.HHL / 815.HHL



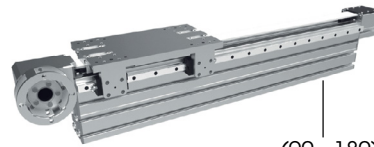
(90×180)

drážka BH 10
v = 3 m/s
a = 5 m/s²
Eagle 8 L = 50 mm

Lineární kuličkové vedení 20 mm

814.HHL.P / 815.HHL.P (ochrana proti prachu)

814.VHL / 815.VHL



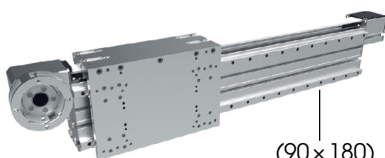
(90×180)

drážka BH 10
v = 3 m/s
a = 5 m/s²
Eagle 8 L = 50 mm

Lineární kuličkové vedení 20 mm

814.VHL.P / 815.VHL.P (ochrana proti prachu)

814.VVL / 815.VVL



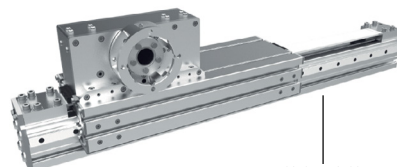
(90×180)

drážka BH 10
v = 3 m/s
a = 5 m/s²
Eagle 8 L = 50 mm

Lineární kuličkové vedení 20 mm

814.VVL.P / 815.VVL.P (ochrana proti prachu)

816.HHL / 817.HHL

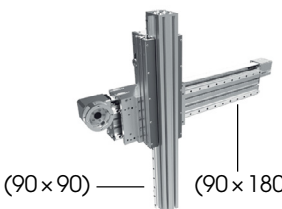


(90×90)

drážka BH 10
v = 3 m/s
a = 5 m/s²
Eagle 8 L = 50 mm

Lineární kuličkové vedení 20 mm

818.HHL.L / 819.HHL.L



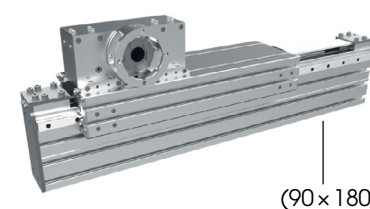
(90×90)

(90×180)

drážka BH 10
v = 3 m/s
a = 5 m/s²
Eagle 8 L = 50 mm

Lineární kuličkové vedení 20 mm

820.VHL / 821.VHL

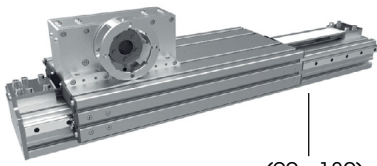


(90×180)

drážka BH 10
v = 3 m/s
a = 5 m/s²
Eagle 8 L = 50 mm

Lineární kuličkové vedení 20 mm

826.HHL / 827.HHL

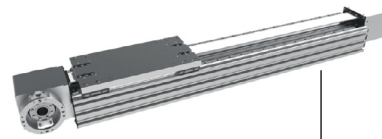


(90 × 180)

drážka BH 10
v = 3 m/s
a = 5 m/s²
Eagle 8 L = 50 mm

Lineární kuličkové vedení 20 mm

822.HHL / 823.HHL

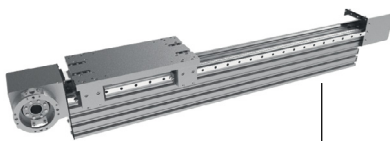


(135 × 225)

drážka BH 10
v = 3 m/s
a = 5 m/s²
Eagle 10 L = 75 mm

Lineární kuličkové vedení 25 mm

822.VHL / 823.VHL



(135 × 225)

drážka BH 10
v = 3 m/s
a = 5 m/s²
Eagle 10 L = 75 mm

Lineární kuličkové vedení 25 mm

822.VVL / 823.VVL

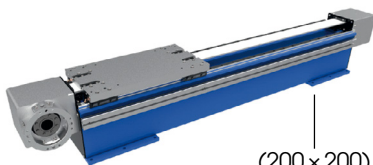


(135 × 225)

drážka BH 10
v = 3 m/s
a = 5 m/s²
Eagle 10 L = 75 mm

Lineární kuličkové vedení 25 mm

824.HHL / 825.HHL

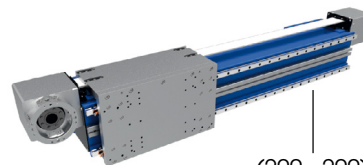


(200 × 200)
ocel

drážka BH 10
v = 3 m/s
a = 5 m/s²
Eagle 10 L = 75 mm

Lineární kuličkové vedení 25 mm

824.VVL / 825.VVL

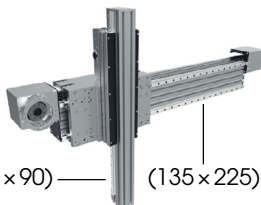


(200 × 200)
ocel

drážka BH 10
v = 3 m/s
a = 5 m/s²
Eagle 10 L = 75 mm

Lineární kuličkové vedení 25 mm

828.HHL.L / 829.HHL.L

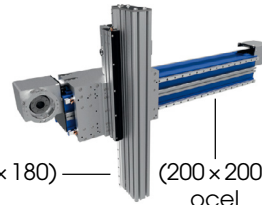


(90 × 90) — (135 × 225)

drážka BH 10
v = 3 m/s
a = 5 m/s²
Eagle 10 L = 75 mm
Eagle 8 L = 50 mm

Lineární kuličkové vedení 20/25 mm

830.HHL.L / 831.HHL.L

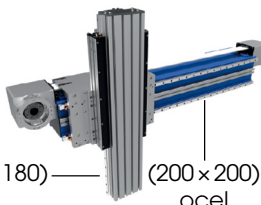


(90 × 180) — (200 × 200)
ocel

drážka BH 10
v = 3 m/s
a = 5 m/s²
Eagle 10 L = 75 mm
Eagle 8 L = 50 mm

Lineární kuličkové vedení 20/25 mm

832.HHL.L / 833.HHL.L



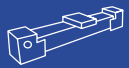
(90 × 180) — (200 × 200)
ocel

drážka BH 10
v = 3 m/s
a = 5 m/s²
Eagle 10 L = 75 mm
Eagle 8 L = 50 mm

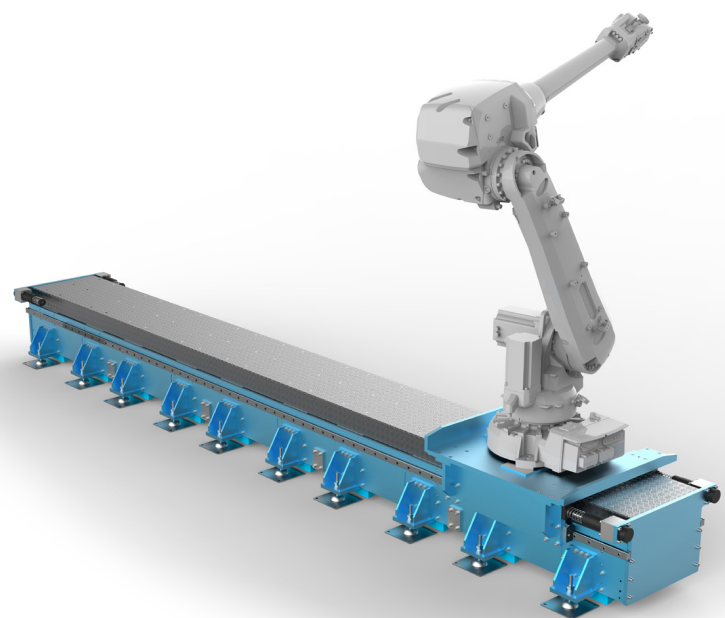
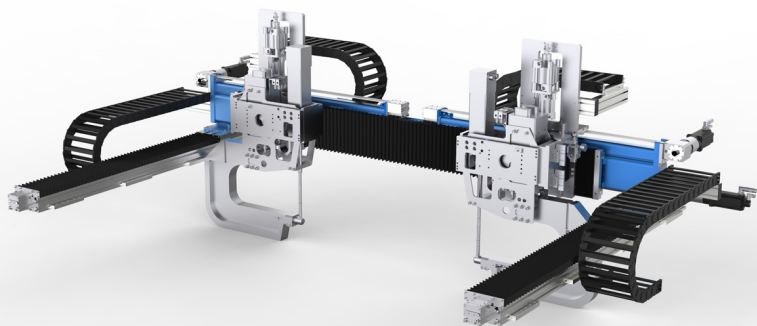
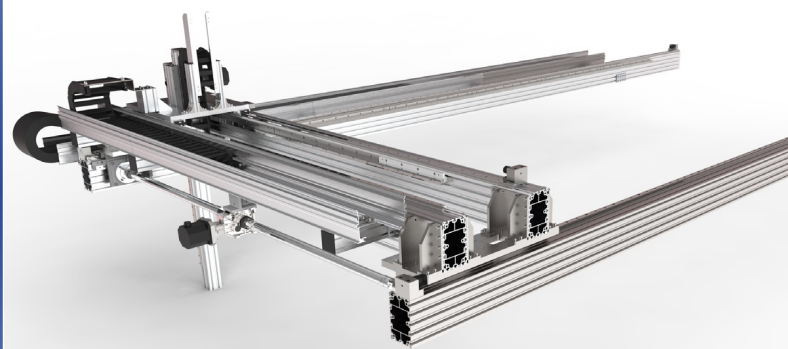
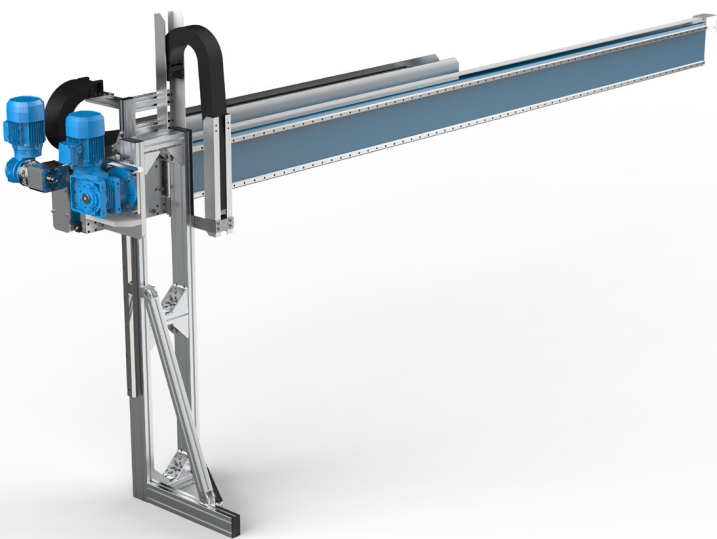
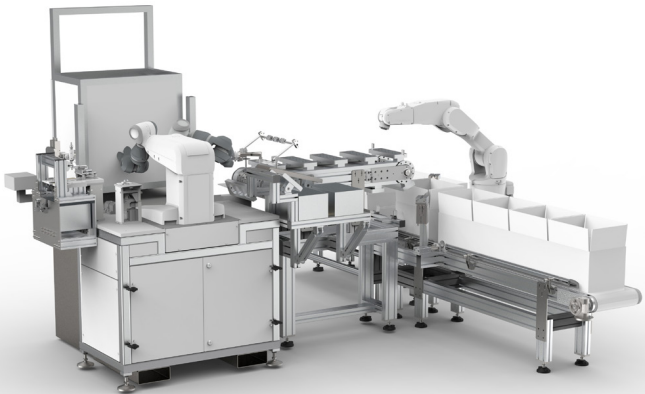
Lineární kuličkové vedení 20/25 mm

Vysvětlivky:

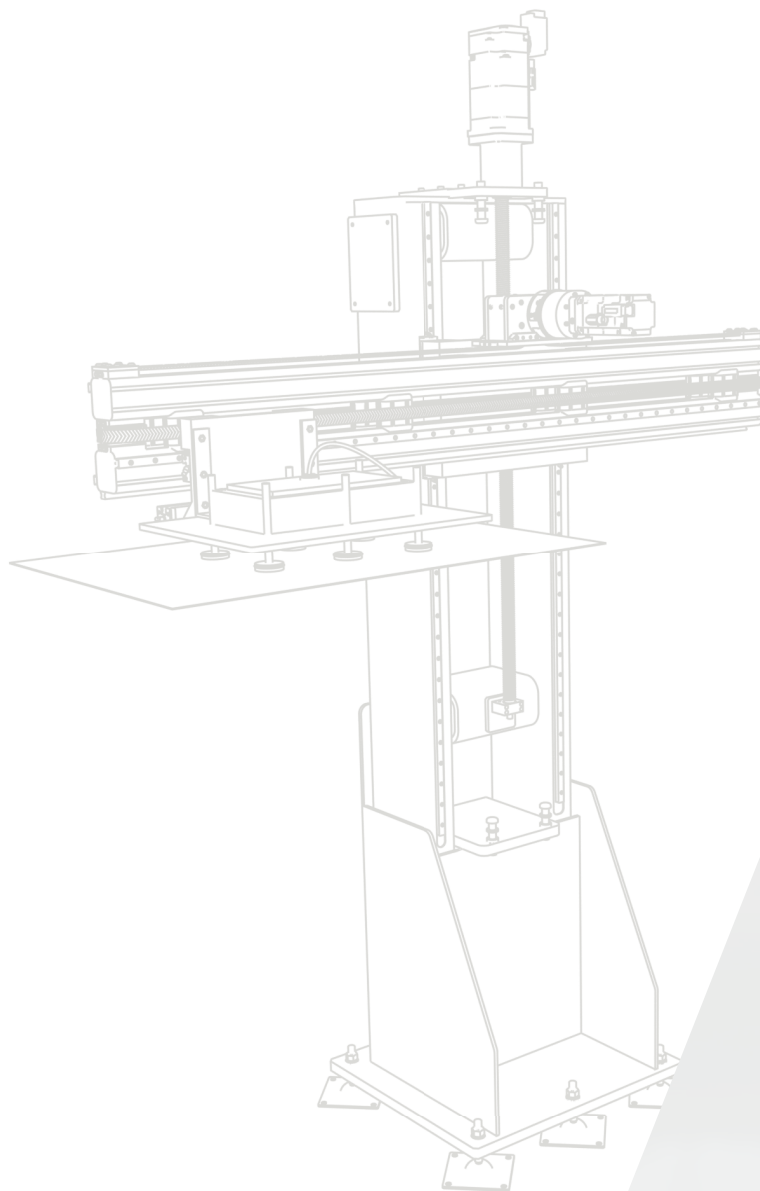
- T5** - ozubený řemen s rovnými zuby (rozteč 5 mm)
- AT10** - ozubený řemen s rovnými zuby (rozteč 10 mm)
- L** - šířka řemenu
- Eagle** - šípový řemen



Lineární pohony - přehled modelů



FC série



Dovozce pro Českou a Slovenskou republiku

VSK Profi, s.r.o.

Hřbitovní 1324/27a, 312 00 Plzeň-Doubravka, Česká republika

T +420 377 152 229 | **E** info@alusic-profil.cz | **W** alusic-profil.cz

ALUSIC S.R.L.

Via Bologna, 10/A - 12084 - Mondovì (CN) - ITALY

T (+39) 0174.55.29.49 | **F** (+39) 0174.47.975 | **Skype** sic.com

E alusic@alusic.com | **W** alusic.com

© copyright - 02/2022